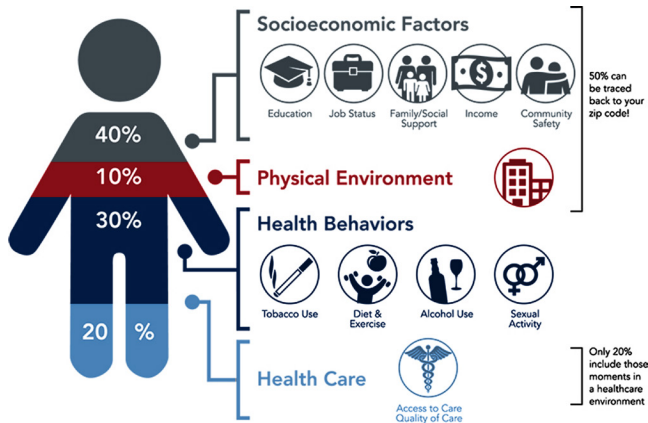




DOCUMENTING SDOH Z CODES



Institute for Clinical Systems Improvement; Going Beyond Clinical Walls: Solving Complex Problems, 2014. Graphic designed by ProMedica

Health systems increasingly understand the importance of addressing social determinants of health (SDOH) to improve outcomes and decrease cost as **80% of an individual's health is impacted by factors outside their healthcare environment.** Improvement in overall population health can be significantly enhanced through clinical-community integrated efforts that address SDOH.

WHAT ARE SDOH ICD-10-CM Z CODES?

The ICD 10-CM Official Guidelines for Coding and Reporting define them as "other reasons for healthcare encounters" essential in identifying and addressing SDOH.

WHO CAN DOCUMENT?

Any healthcare setting as a first-listed/principal diagnosis or secondary code. Providers, other than physicians who document inpatient/client records – social workers, nurses, other allied health staff – can assign SDOH Z codes.

WHY ARE THEY IMPORTANT TO DOCUMENT?

Documenting Z codes in a patient record allows all providers to identify barriers that impact health and align necessary community support services. Connecting SDOH Z codes with claims data can also support policy and payment reform.

Key national organizations are partnering to improve SDOH Z code utilization, expand available SDOH Z codes and progress forward with reimbursement.

ICD-10-CM Z CODE EXAMPLES

SOCIAL DETERMINANT	ICD-10 CODE/ DESCRIPTION
Difficult/unstable housing or housing support services instability	Z59.0 Lack of housing
	Z59.1 Inadequate housing
	Z59.8 Other problems related to housing and economic circumstances
Environmentally-compromised housing (e.g. lead)	Z77.1 Contact with and (suspected) exposure to other environmental pollution
Food insecurity	Z59.4 Lack of adequate food and safe drinking water
Transportation difficulty	Z91.89 Other specified personal risk factors, not elsewhere classified
Interpersonal violence	Z91.41 Personal history of adult abuse
Economic difficulties	Z59.9 Problem related to housing and economic circumstances, unspecified
Lack of social support	Z60.4 Social isolation, exclusion and rejection

RESOURCES

- + [American Hospital Association podcast on how and why to use SDOH Z codes](#)
- + [National Quality Forum and 60 diverse healthcare partners discuss SDOH implications and key levers to addressing payment, quality and policy](#)
- + [American Medical Association and UnitedHealthcare partner to standardize and expand SDOH Z codes](#)